



AISI MANUAL

Errata to Cold-Formed Steel Design Manual

2008 EDITION

Amendment on July 26, 2010

Amendment on June 17, 2010

Errata to Cold-Formed Steel Design Manual, 2008 Edition

Amendment on July 26, 2010

1. On page VI-100, add the following below item 8.4:

8.5 The maximum speed of testing as determined by the rate of separation of the testing machine heads shall be limited to 0.1 in. (2.5 mm) per minute or the rate caused by a loading rate of 500 lbs. (approximately 2.2 kN) per minute.

Amendment on June 17, 2010

1. On page I-9, change F_u value for ST50H from "66" to "65".
2. Replace Figure 1 on page VI-48 with the Figure 1 shown on the next page of this document.

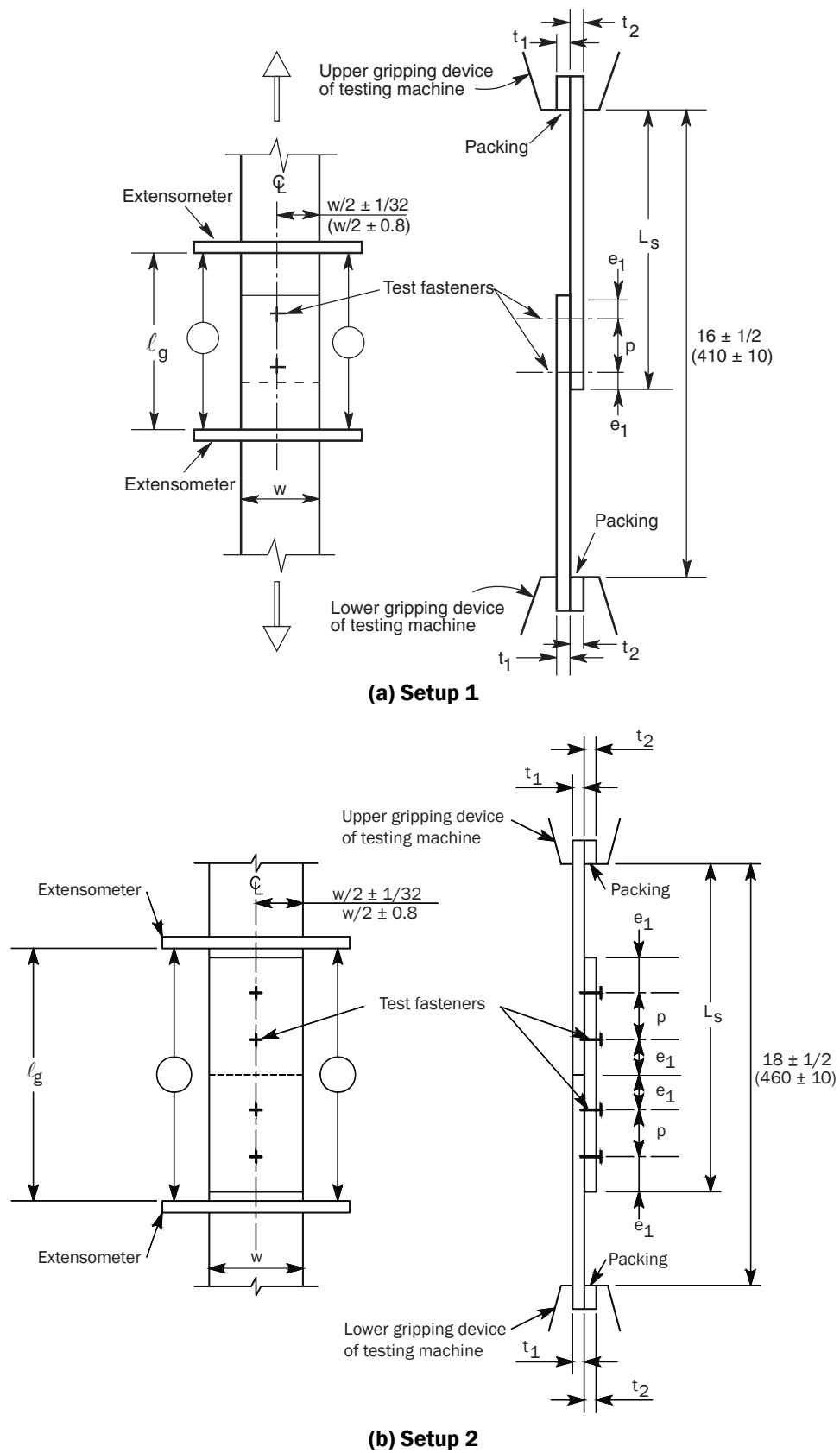


Figure 1 - Standard Lap-Joint Shear Test, units - in. (mm)